



Oil Observation Checklist

National Oceanic and Atmospheric Administration

Please complete as thoroughly as possible.

Oil slick characteristics

- Dark (heavy) oil with associated sheen
- Combination of dark oil and sheen
- Sheen (silver, rainbow) with no sign of dark oil

Length/width: _____

Orientation (e.g., north by south): _____

Is the source visible?

- No Yes, describe: _____

On-scene conditions

Latitude/longitude: _____

Lat/long is:

- Downwind (leading) edge of slick
- Center of slick
- Other (spill source, point closest to land, etc.): _____

Landmark for reference: _____

Sea state:

- Calm Non-breaking waves Whitecaps or heavier

Visibility: _____

Any wildlife seen near oil slick/sheen? No Yes

Type/number: _____

Flight information

Observer contact information:

Aircraft identification: _____ Altitude/speed: _____

Observation date and time: _____

Additional comments: _____

See reverse side



Oil Observation Checklist

National Oceanic and Atmospheric Administration

Please complete as thoroughly as possible.

Oil slick characteristics

- Dark (heavy) oil with associated sheen
- Combination of dark oil and sheen
- Sheen (silver, rainbow) with no sign of dark oil

Length/width: _____

Orientation (e.g., north by south): _____

Is the source visible?

- No Yes, describe: _____

On-scene conditions

Latitude/longitude: _____

Lat/long is:

- Downwind (leading) edge of slick
- Center of slick
- Other (spill source, point closest to land, etc.): _____

Landmark for reference: _____

Sea state:

- Calm Non-breaking waves Whitecaps or heavier

Visibility: _____

Any wildlife seen near oil slick/sheen? No Yes

Type/number: _____

Flight information

Observer contact information:

Aircraft identification: _____ Altitude/speed: _____

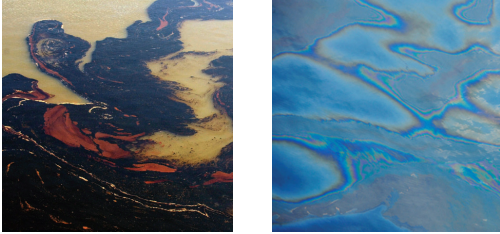
Observation date and time: _____

Additional comments: _____

See reverse side

THE PUBLIC SHOULD REPORT OIL SPILLS TO THE U.S. COAST GUARD: (800) 424-8802

Oil slick characteristics



Dark (left): Heavy oil may appear brown, reddish, or black.

Sheen (right): Light oil may appear rainbow or silver.

Color can be difficult to distinguish unless you are directly above the slick.

Is the source visible? Sometimes a slick can be traced back to a source, such as a ship or platform. Other times, the slick has moved away from the source or the source is submerged.

On-scene conditions

Landmark The closest landmark for reference is used to verify the lat/longs that are reported. Example reports of landmarks are:

50 miles south of South Pass

20 miles west of Lincoln City

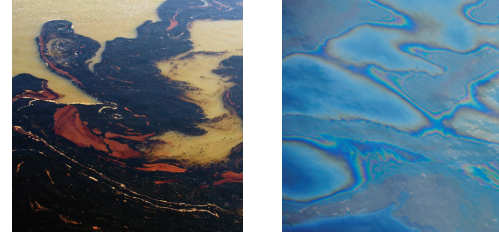
Wildlife description Record the type and number of animals that were observed in or near the slick.

You can find online copies of this checklist, along with the NOAA job aid, *Open Water Oil Identification* at:

response.restoration.noaa.gov/aerialobs

THE PUBLIC SHOULD REPORT OIL SPILLS TO THE U.S. COAST GUARD: (800) 424-8802

Oil slick characteristics



Dark (left): Heavy oil may appear brown, reddish, or black.

Sheen (right): Light oil may appear rainbow or silver.

Color can be difficult to distinguish unless you are directly above the slick.

Is the source visible? Sometimes a slick can be traced back to a source, such as a ship or platform. Other times, the slick has moved away from the source or the source is submerged.

On-scene conditions

Landmark The closest landmark for reference is used to verify the lat/longs that are reported. Example reports of landmarks are:

50 miles south of South Pass

20 miles west of Lincoln City

Wildlife description Record the type and number of animals that were observed in or near the slick.

You can find online copies of this checklist, along with the NOAA job aid, *Open Water Oil Identification* at:

response.restoration.noaa.gov/aerialobs